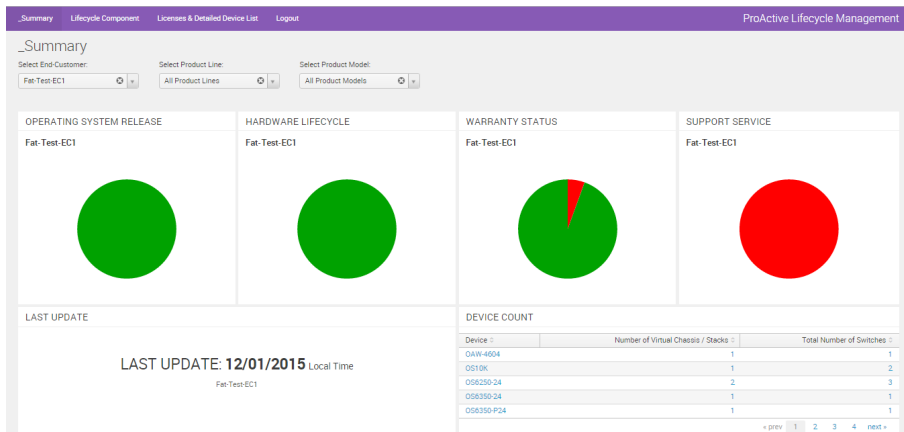


ALCATEL-LUCENT PROACTIVE LIFECYCLE MANAGEMENT

Alcatel-Lucent ProActive Lifecycle Management provides access to the essential lifecycle information regarding your Alcatel-Lucent Enterprise Wi-Fi[®] and LAN switching products with minimal effort and cost. It allows your IT staff to ensure that your network is up to date and operating within the best practices. Planning for future network infrastructure budget expenditures is also simplified as the application provides ample notification through an easily identifiable color scheme. ProActive Lifecycle Management is a cloud-based application which works in conjunction with the Alcatel-Lucent OmniVista[®] 2500 Network Management System (NMS).



and securely transmits attributes of the products to the Alcatel-Lucent Enterprise cloud. It correlates the product attributes on your network with information within our Customer Relationship Management (CRM) tools and presents you with the status of your products in terms of software lifecycle, hardware lifecycle, warranty, and support status. The information is presented on a web portal, providing a view of the network as a whole or for individual devices.

You can drill down to obtain additional details including:

- Current maintenance release and the generally available release of the operating system for a given device
 - Recommended replacements for end-of-sale product
 - Start and end dates for the warranty on devices and support service entitlements purchased on devices
- Options are available to download release notes for the product's operating systems as well as request a quote to your reseller of Alcatel-Lucent Enterprise solutions for replacement products and support service entitlements.

For each view and table within the ProActive Lifecycle Management application you can download the table. This allows you to capture the status of your network at a moment in time and share the information with colleagues in your organization.

During the installation of the OmniVista 2500 NMS you are presented with the option to enable ProActive Lifecycle Management. If you choose not to enable ProActive Lifecycle Management during the installation, you can enable it at a later date. By default, the product attributes are pushed from the OmniVista 2500 NMS every two weeks. In addition, an option is available to manually initiate the transmission of the product attributes to the Alcatel-Lucent Enterprise cloud.

BENEFITS

- Time savings – Quickly and easily generate an inventory list of Alcatel-Lucent Enterprise Wi-Fi and LAN switching products on your network. You simply need to log into the portal and export the details from the Device List.
- Risk reduction – You can quickly identify devices which need to have their software upgraded, hardware replaced, or support services renewed. This way, you can ensure that your devices are up to date and the network operation risks are minimized.
- Proactive planning – Ample notification is provided so you can plan for the future at the pace which is best for your business.
- Easy-to-use interface – View the status of your network at a glance from an easily identifiable color scheme. With a couple of mouse clicks you can drill down to obtain details per device.

OVERVIEW

In order to use Proactive LifeCycle Management, Alcatel-Lucent OmniVista[®] Network Management System (NMS) has to be installed at the customer premises. It polls the Alcatel-Lucent Enterprise Wi-Fi and LAN switching products on your network



SUPPORTED PRODUCTS AND REQUIREMENTS

The following products are supported in the initial release of ProActive Lifecycle Management.

LAN SWITCHES	AOS SUPPORTED	WIRELESS LAN SWITCHES/CONTROLLERS	AOS SUPPORTED
OmniSwitch 10K	AOS 7.3.4.R01 or greater	OmniAccess 4005	AOS-W 6.4.2.6 or greater
OmniSwitch 9000E	AOS 6.4.6.218.R01 or greater	OmniAccess 4010	AOS-W 6.4.2.6 or greater
OmniSwitch 6900	AOS 7.3.4.R01 or greater	OmniAccess 4030	AOS-W 6.4.2.6 or greater
OmniSwitch 6860E	AOS 8.1.1.585.R01 or greater	OmniAccess 4504XM	AOS-W 6.4.2.6 or greater
OmniSwitch 6860	AOS 8.1.1.585.R01 or greater	OmniAccess 4604	AOS-W 6.4.2.6 or greater
OmniSwitch 6850E	AOS 6.4.6.218.R01 or greater	OmniAccess 4704	AOS-W 6.4.2.6 or greater
OmniSwitch 6850	AOS 6.4.4.707.R01 or greater	OmniAccess 4550	AOS-W 6.4.2.6 or greater
OmniSwitch 6855	AOS 6.4.6.218.R01 or greater	OmniAccess 4650	AOS-W 6.4.2.6 or greater
OmniSwitch 6450	AOS 6.6.5.R02 or greater	OmniAccess 4750	AOS-W 6.4.2.6 or greater
OmniSwitch 6350	AOS 6.7.1.147.R01 or greater		
OmniSwitch 6250	AOS 6.6.5.R02 or greater		

SUPPORTED BROWSERS

The following is a list of web browsers supported for use when accessing the ProActive Lifecycle Management web portal.

- Firefox: V44 or greater
- Internet Explorer: V9 or greater
- Safari: V9 or greater
- Chrome: V49 or greater

INFORMATION AND REQUESTS

For further information on ProActive Lifecycle Management or support services for Alcatel-Lucent Enterprise Wi-Fi and LAN switching products, please contact your Business Partner or our sales representative. To find a Business Partner, please use [Find A Reseller](#) on our website.

enterprise.alcatel-lucent.com

Alcatel-Lucent and the Alcatel-Lucent Enterprise logo are trademarks of Alcatel-Lucent. To view other trademarks used by affiliated companies of ALE Holding, visit: enterprise.alcatel-lucent.com/trademarks. All other trademarks are the property of their respective owners. The information presented is subject to change without notice. Neither ALE Holding nor any of its affiliates assumes any responsibility for inaccuracies contained herein. (April 2016)